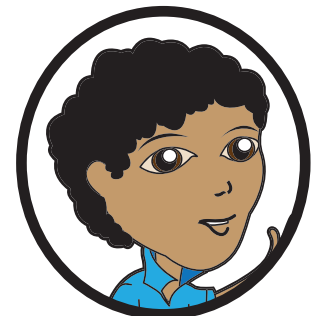
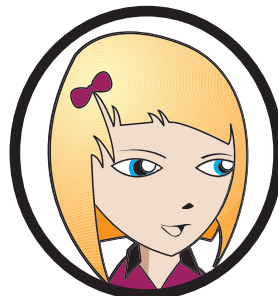
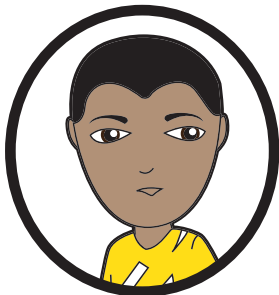


## Link to home

Draw a line between the character and their home.



## Word Bank

indah - beautiful  
 Timur - East  
 gunung berapi - volcano  
 pusat pertokoan - shopping centre  
 gunung - mountain  
 di atas - on top  
 tari-tarian - dances  
 pertunjukan wayang - puppet show  
 merah tua - dark red  
 hitam - black  
 makan - eat

Barat - West  
 ukiran - carving  
 Ibu Kota - Capital city  
 orang - person  
 pulau - island  
 terkenal karena - well known for  
 Jawa - Java  
 di dekat - near, close to  
 kebun binatang - zoo  
 hijau - green  
 pada waktu - in the time of

lukisan - painting  
 kota - city  
 gedung bersejarah - historical building  
 danau - lake  
 di - in, at, on  
 barang-barang perak - silverware  
 rempah-rempah - spices  
 berlibur - to have a holiday  
 suka - to like  
 li buran - holiday/s